

Adding a Watermark



(click to enlarge)

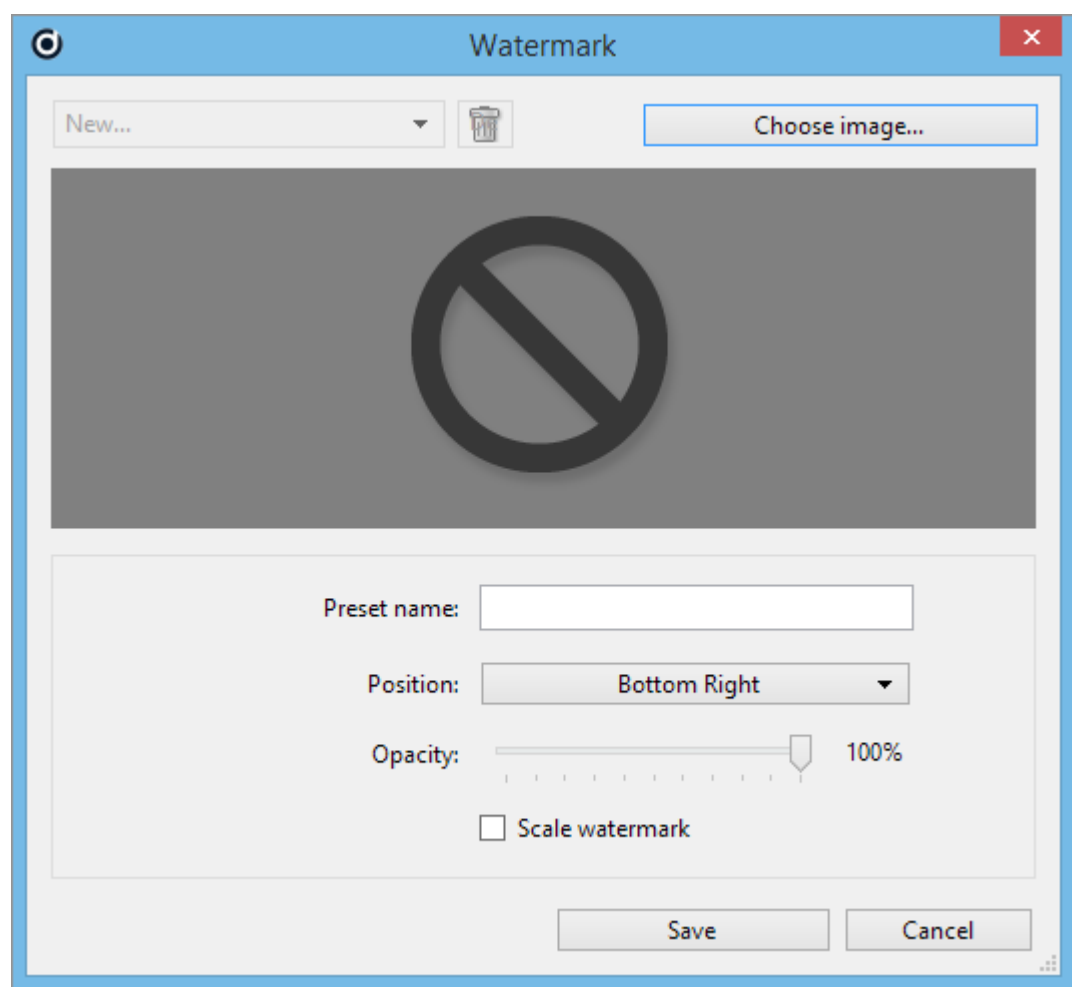
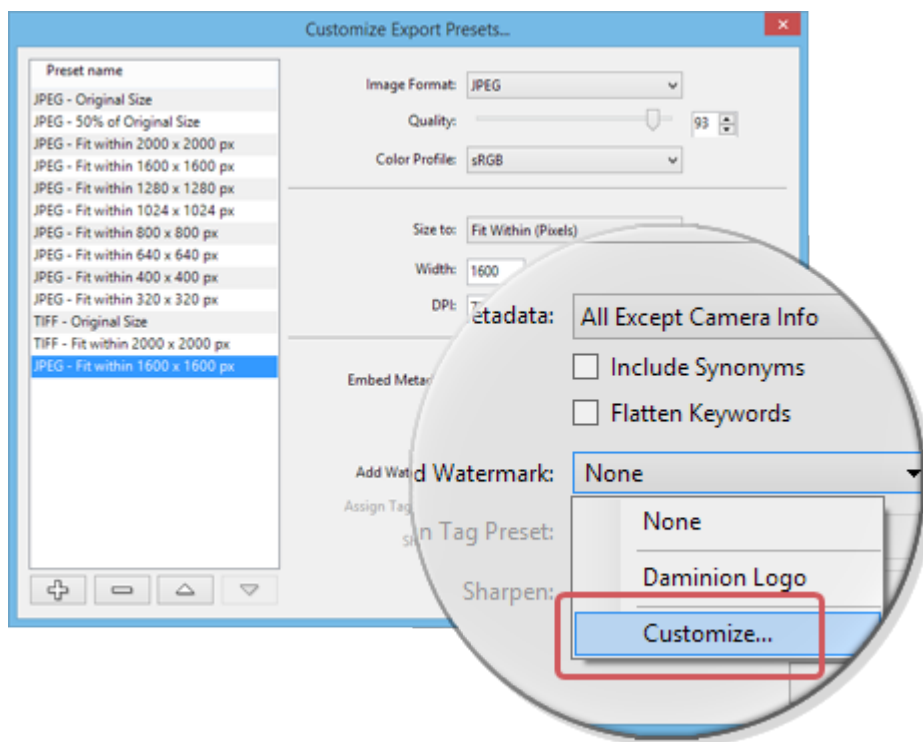
The watermark feature allows you to add a watermark to your images, like the one in the sample above.

The watermark could be your company logo for example or a bitmap-text containing your copyright information.

To launch the watermark editor, select an image, click the **“Export”** button in the upper toolbar and select **“Copy to Folder”** or **“Send by Email”**. In the window that opens, click on the dropdown menu under **“Transform”** and select **“Customize”**.

You will see the **“Customize Export Presets”** dialog as shown in the screen shot below. Press the **“Add Watermark”** dropdown menu and select **“Customize...”**. For instructions on how to customize

export presets, please refer to [Customized Export Presets.](#)

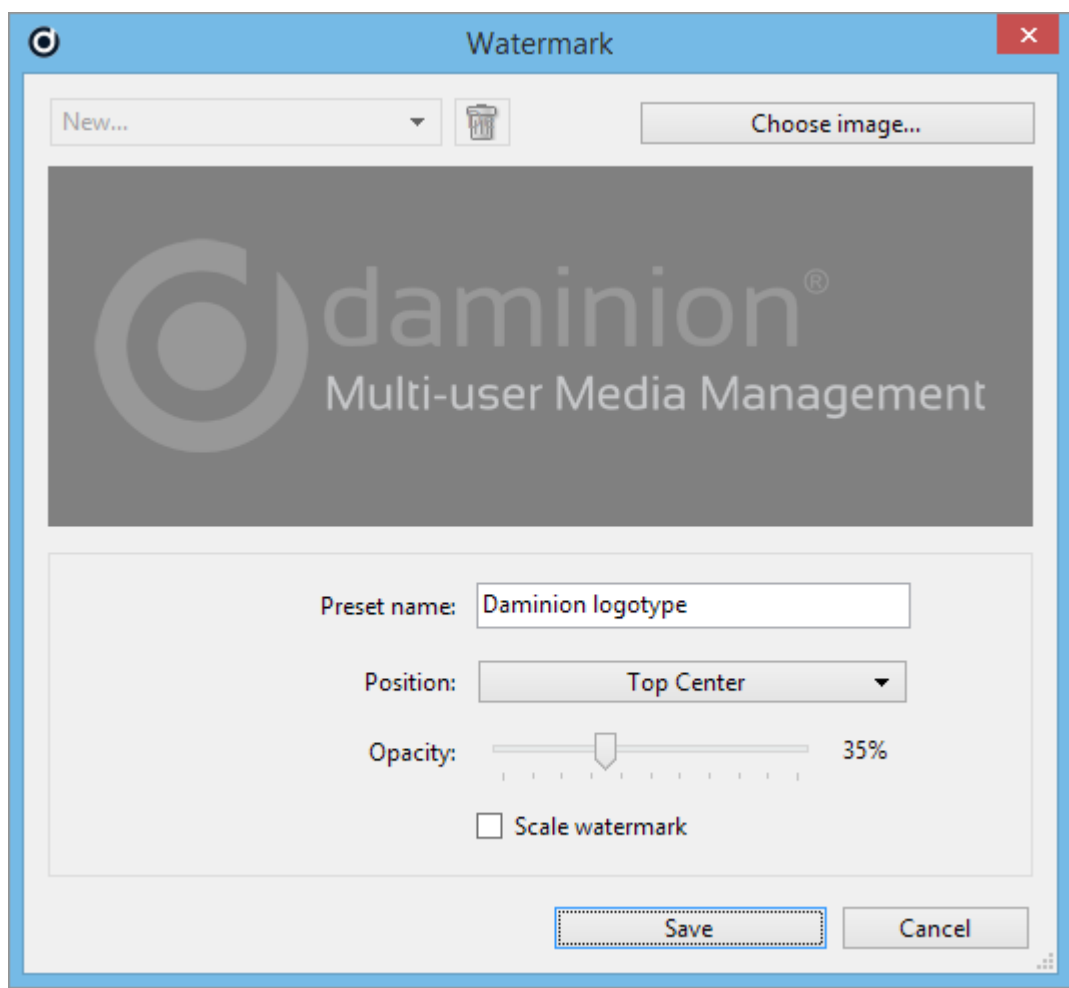


To create a new watermark preset, click “**Choose Image...**” in the top right-hand corner of the dialog-box and select an image from your computer hard drive.

Enter a descriptive name in the “**Preset Name**” box (one that helps you remember the watermark setting for later use).

Use the “**Position**” button to place the watermark where you want it to appear over the master image and set the watermark’s transparency with the “**Opacity**” slider – the lower the value, the more transparent the watermark. If your chosen watermark image is larger than the master image, check the “**Scale Watermark**” option to resize it automatically.

Your final settings should look something like the ones in the screen shot below.



Click the “**Save**” button to save your watermark preset. The dialog will close and the newly created watermark will appear

in the **“Add Watermark”** dropdown list in the **“Customize Export Presets...”** dialog. You can now add this watermark preset to your preset export settings.

After final export, all your images will contain your selected watermark.